

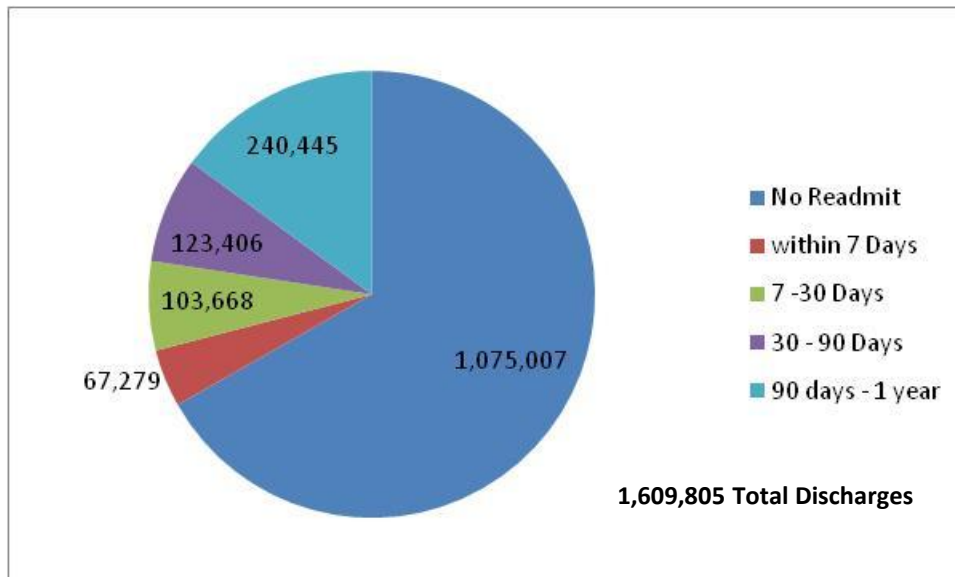


How Are We Doing?

All CA Discharges in 2005

OSHPD Report Released May, 2010

www.oshpd.ca.gov/HID/Products/Health_Facts/index.html



10.6% within 30 days and
18.3 % in 90 days

Variation by Insurance Coverage

-

Insurer	30 Day Readmit Rate	Ave. Readmits/ Patient	% of Hospital Charges (all readmits within 1 year)
Private	10%	1.9	35.7%
Medicare	18.4%	2.1	50.0%
MediCal	15%	2.5	48.6%

Also, Variation by:

- **Type of Care**
 - Medical Admissions most likely to return
 - Half of all Heart Failure, Emphysema and Kidney Failure patients return within one year
- **Region**
 - Highest in LA County, Lowest in Mountain Region
- **Race**
 - African-American patients most likely to be re-admitted, Hispanic patients the least

Public Reporting

- CHART released re-admission rates in November 2010

The screenshot displays the CalHospitalCompare.org website. The header includes the logo, navigation links (EN ESPAÑOL, HOME, RESOURCES & TOOLS, ABOUT US, CONTACT US), and a search bar. The main content area shows search results for 'Heart Failure', indicating 225 results. A sidebar on the left lists various medical conditions for rating. The main results list includes a 'SUPERIOR' rating icon and a table of hospitals with their names and cities.

CalHospitalCompare.org
A service of the California HealthCare Foundation
Rating Hospital Quality in California

Search: Enter county, city, or Zip code

Search Results

View Ratings by:

- Heart Attack
- Heart Bypass Surgery
- Heart Failure ▶**
- Maternity
- Pneumonia
- Other Conditions
- Other Surgery

Your search for **Heart Failure** has found **225** results based on **Quality of Care**.

Click on a hospital name for detailed ratings. Use the tabs on the left to compare this list of hospitals by conditions or procedures. Or narrow your search using the compare button below.

To see the rating scales, click on any icon or [About the Ratings](#).

Check up to 5 hospitals to


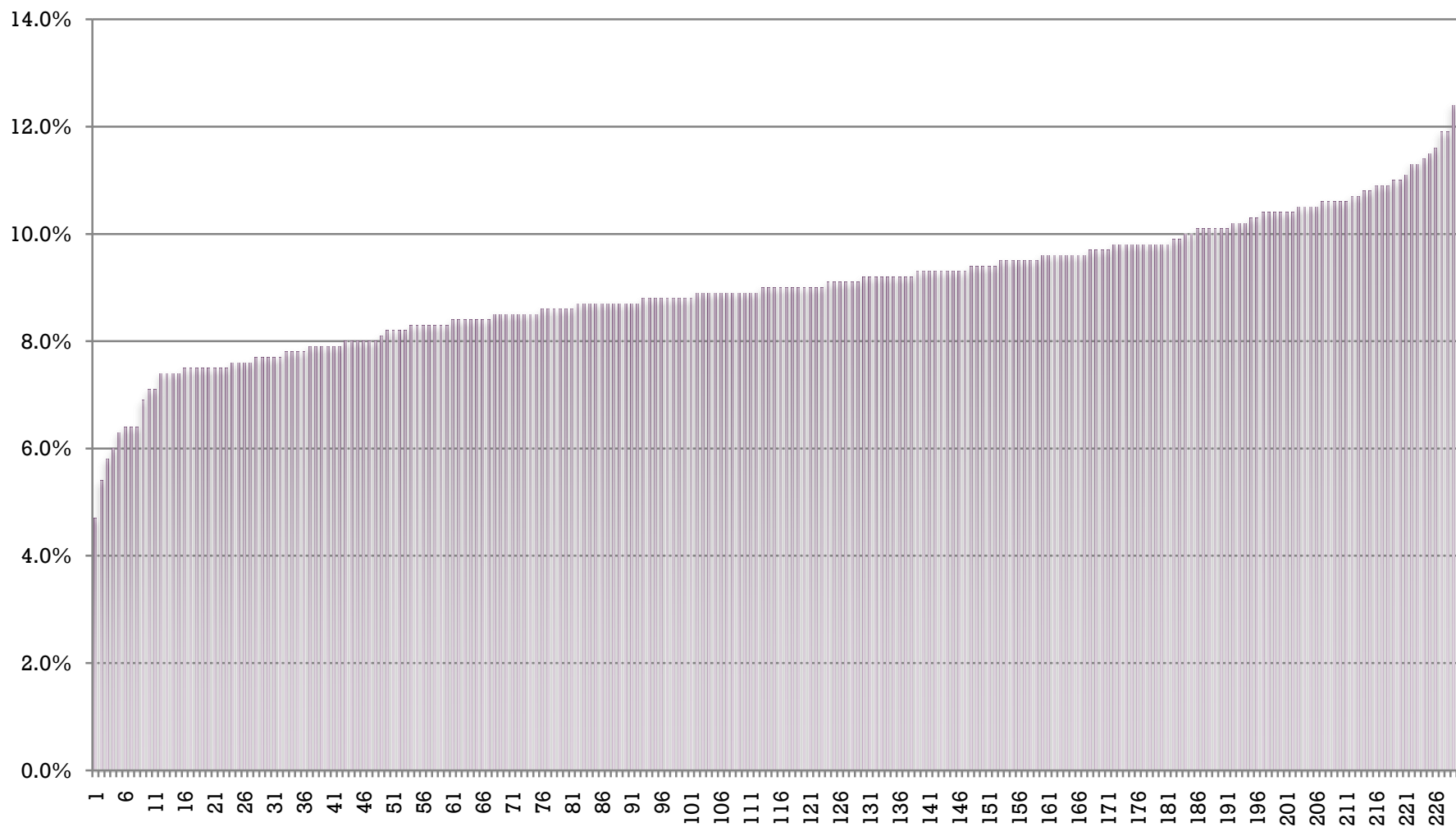
	City
 <input type="checkbox"/> AHMC Anaheim Regional Medical Center	Anaheim
<input type="checkbox"/> Alameda County Medical Center - Highland Hospital	Oakland
<input type="checkbox"/> Bakersfield Memorial Hospital	Bakersfield
<input type="checkbox"/> California Hospital Medical Center	Los Angeles
<input type="checkbox"/> Community Hospital of San Bernardino	San Bernardino
<input type="checkbox"/> Desert Regional Medical Center	Palm Springs
<input type="checkbox"/> Doctors Hospital of Manteca	Manteca
<input type="checkbox"/> Fountain Valler Regional Hospital & Medical Center	Fountain Valley

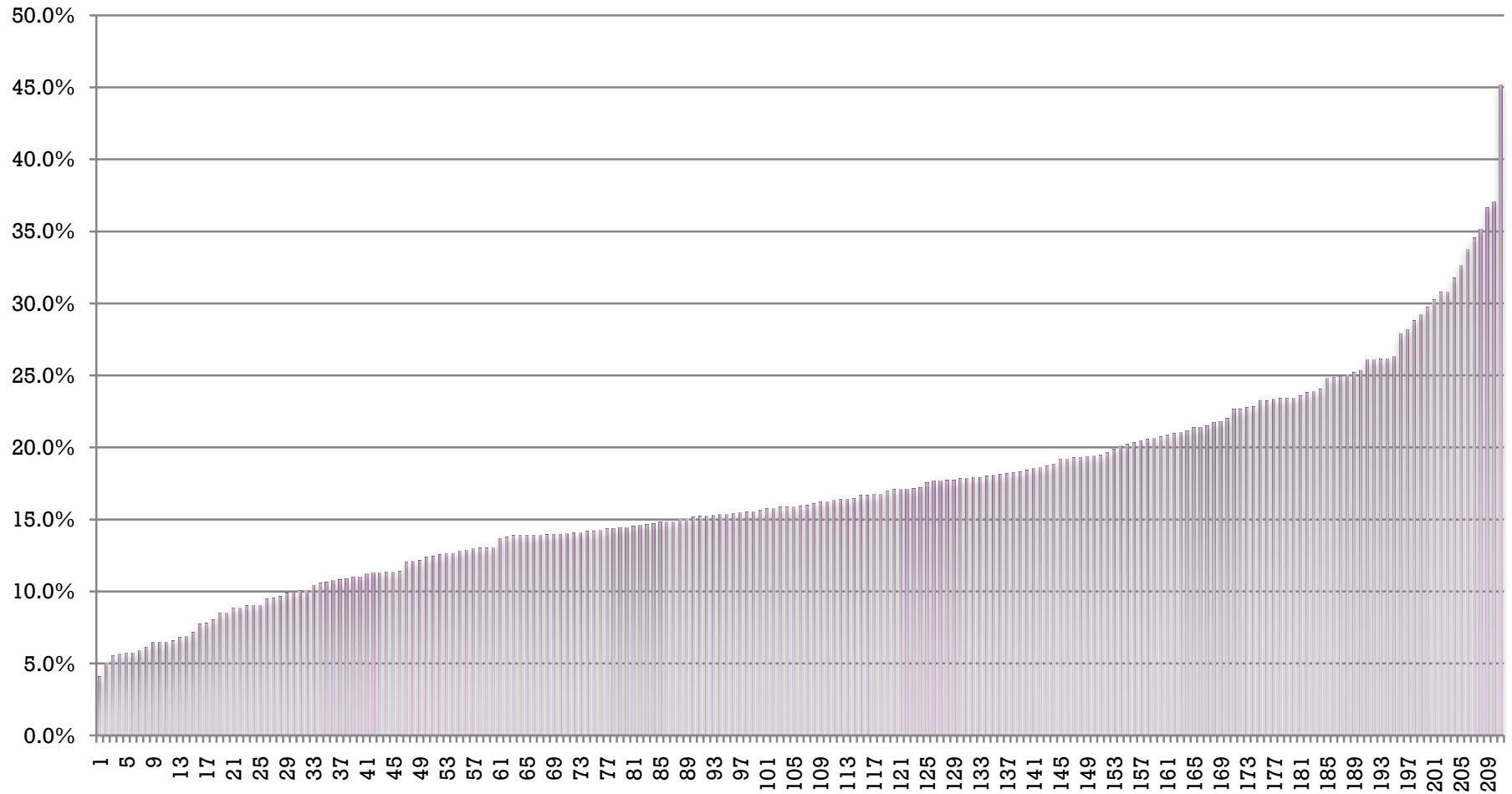
CHART 1 PPRs 11-10

	All PPRs	AMI	HF	Pneum
Mean	9.3%	16.5%	16.5%	9.9%
High	12.4%	45.2%	28.1%	19.3%
Low	5.8%	4.1%	2.5%	2.5%
10th Percentile	10.7%	25.2%	20.8%	12.4%
90th Percentile	7.8%	6.5%	11.0%	6.6%
Superior	46	7	19	11
Poor	4	8	9	6

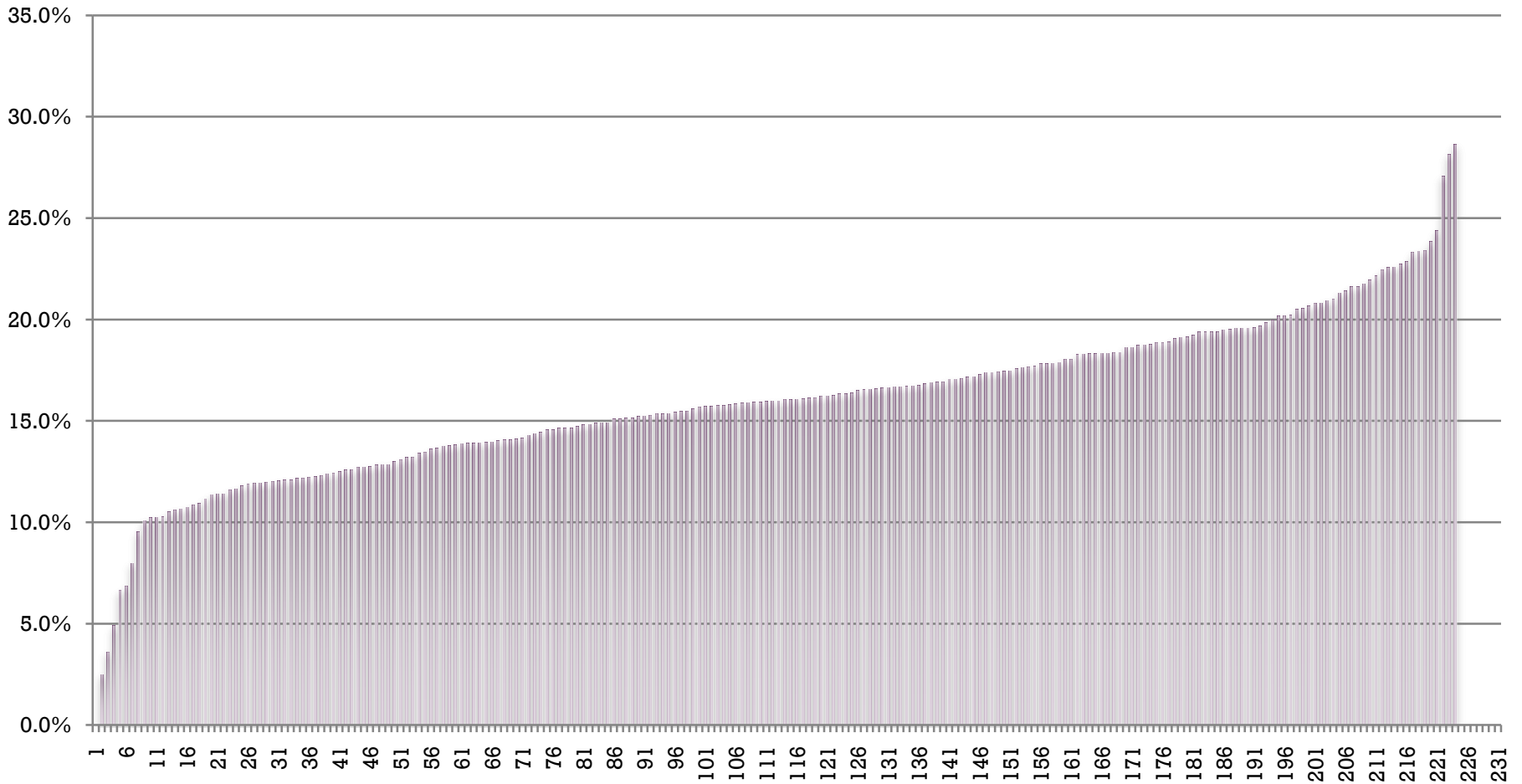
All PPRs



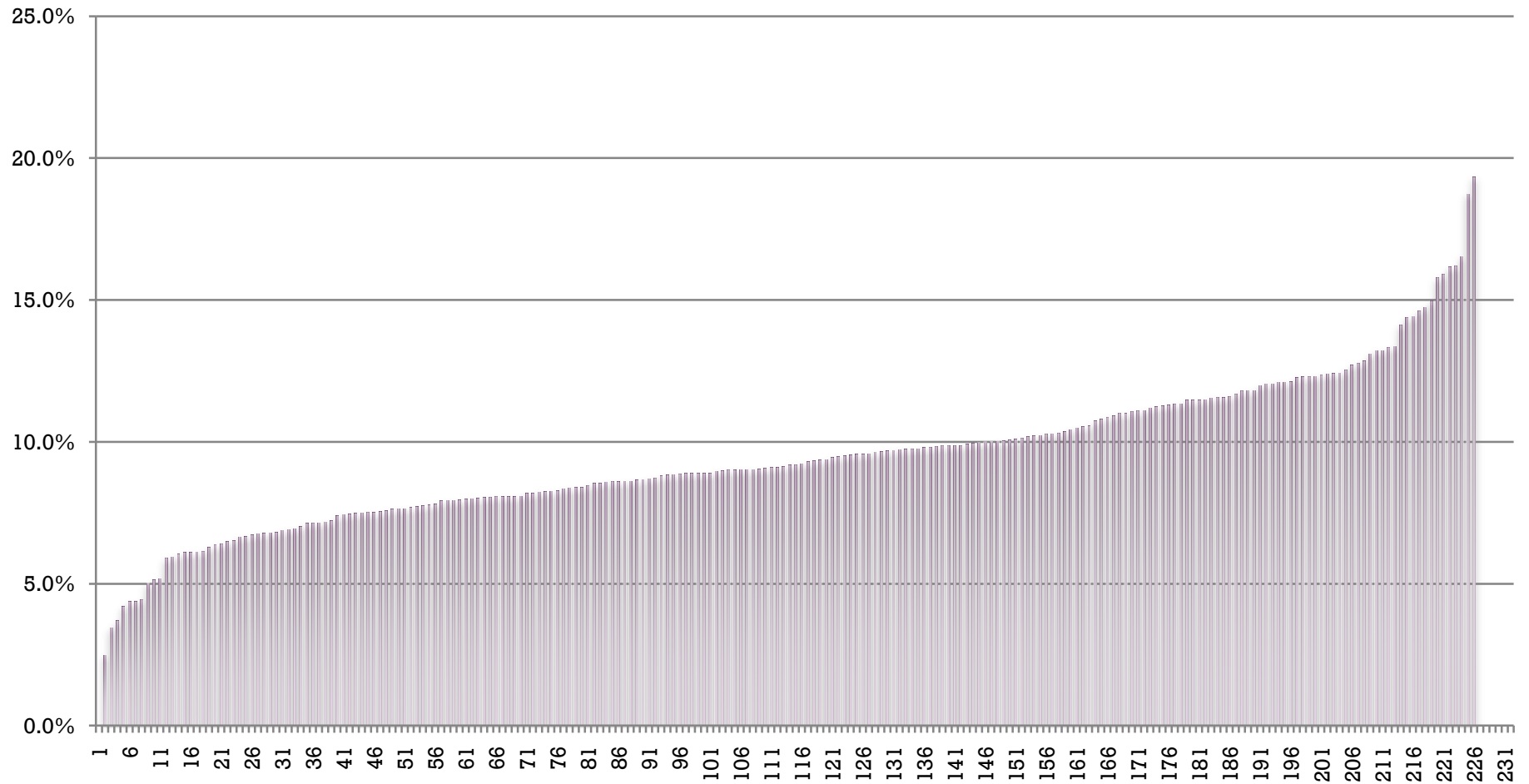
AMI Readmissions



CHF Readmissions



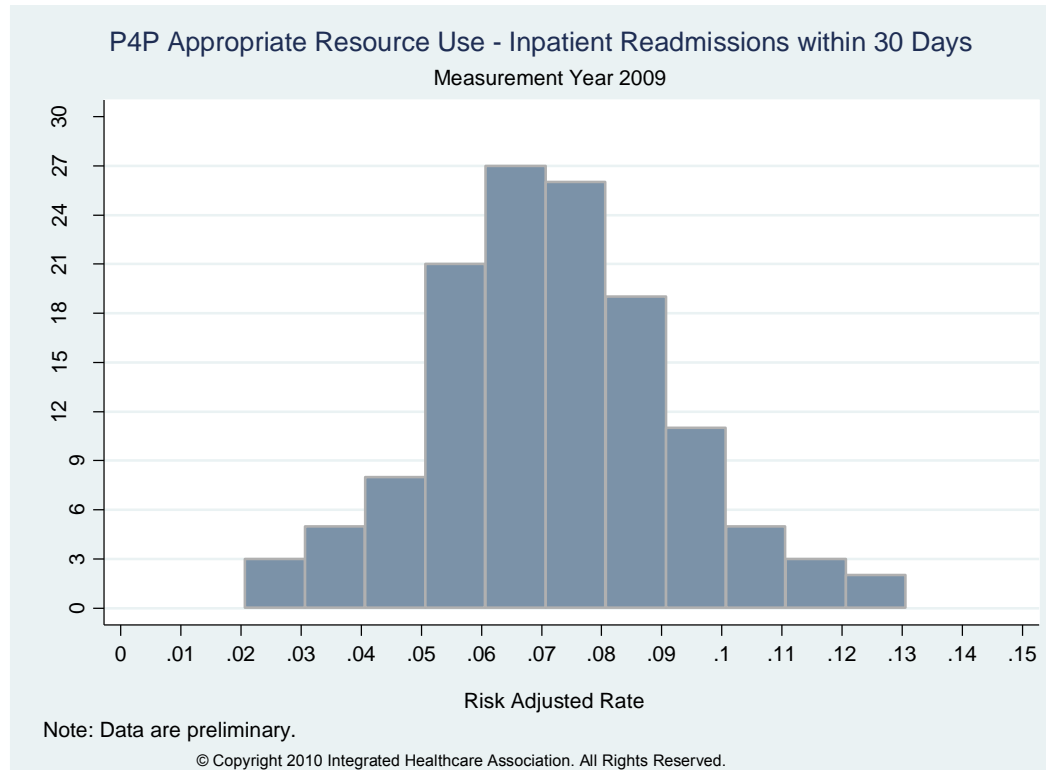
Pneumonia



Market Incentives:

- Hospital:
 - ACA: SEC. 3025. HOSPITAL READMISSIONS REDUCTION PROGRAM
 - Starts Oct 1, 2012
 - Reduced payment for readmissions within 30 days by 1% in year 1, 2% in year 2, 3% in year 3
 - Begins with selected conditions and then expands to cover more conditions
- Physician Group:
 - IHA P4P includes re-admission rates in 2010 as part of the Resource Use Domain
 - Two health plans to bonus in 2011

IHA P4P Distribution for Physician Groups



Median = 7%

**Commercial
HMO Patients**

Case mix-adj. rate for re-admissions to acute hospitals for commercially insured HMO patients of all ages, excluding maternity/Newborn and SNF discharges.
(NQF-endorsed measure)

Who Is Here

- ❖ For the Learning Community
 - 27 Hospitals plus partners
- ❖ For the Action Network
 - 23 Hospitals plus partners