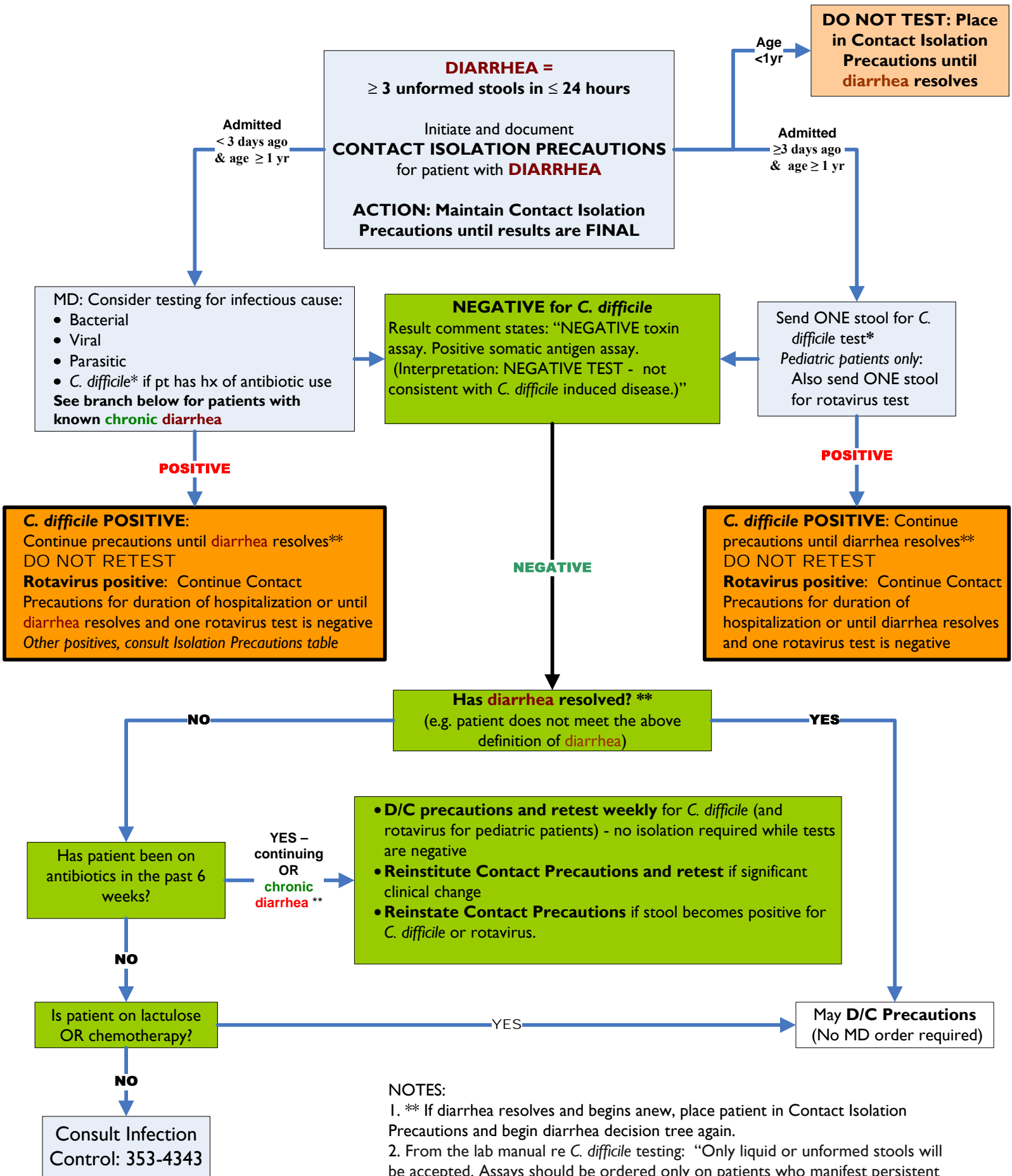


Diarrhea Decision Tree – Revised 5/2012



NOTES:
 1. ** If diarrhea resolves and begins anew, place patient in Contact Isolation Precautions and begin diarrhea decision tree again.
 2. From the lab manual re *C. difficile* testing: "Only liquid or unformed stools will be accepted. Assays should be ordered only on patients who manifest persistent diarrhea, have recently received antimicrobial or antiviral therapy, and are not receiving stool softening agents." "If it ain't loose, the test is of no use"